



Gatwick Airport Northern Runway Project

Bat Tree Survey Report

Book 10

VERSION: 1.0

DATE: AUGUST 2024

Application Document Ref: 10.61

PINS Reference Number: TR020005

Table of Contents

1	Introduction	2
1.1	Purpose of this Document	2
1.2	Relevant Legislation	3
2	Survey Methodologies	4
2.1	Ground Level Tree Assessment	4
2.2	Aerial Tree Inspection	4
2.3	Nocturnal Bat Emergence Surveys	5
3	Results	6
3.1	Ground Level Tree Assessment	6
3.2	Aerial Tree Inspection	17
3.3	Nocturnal Emergence Surveys	37
4	Summary	38
5	References	39

Figures

Figure 3.1 – 3.4 Ground Level Tree Assessment Results

Figure 3.5 – 3.8 Aerial Tree Inspection Results

1 Introduction

1.1 Purpose of this Document

- 1.1.1 This Bat Tree Survey Report (BTSR) has been prepared on behalf of Gatwick Airport Limited (GAL or the Applicant) in relation to its Northern Runway Project. The proposal will make best use of Gatwick Airport's existing runways and infrastructure (referred to within this report as 'the Project'). The Project proposes alterations to the existing northern runway which, together with the lifting of the current restrictions on its use, would enable dual runway operations. The Project includes the development of a range of infrastructure and facilities which, with the alterations to the northern runway, would enable the airport passenger numbers and aircraft operations to increase.
- 1.1.2 Surveys of trees for the presence of roosts of key woodland bat species formed part of the landscape-scale radio tracking study completed as part of the submission (ES Appendix 9.6.3 Bat Trapping and Radio Tracking Surveys [APP-131 and APP-132]). No trees that are proposed for removal (based on the preliminary design work and removal plans) were found to support roosts of the woodland species (including Bechstein's bat). In addition, the activity surveys undertaken (as set out in ES Appendix 9.6.2 Ecology Survey Report [[APP-125](#), [APP-124](#), [APP-126](#), [APP-127](#), [APP-128](#), [APP-129](#), [APP-130](#)]) found the vegetation along the A23 to be predominantly of low value to foraging and commuting bats compared to other parts of the Project site. The low numbers recorded suggest this does not constitute an important roost location for bats.
- 1.1.3 The Applicant has committed to detailed pre-commencement surveys of trees to be removed with respect to their potential to support roosting bats in accordance with paragraph 5.4.18 of ES Appendix 5.3.2: Code of Construction Practice [[REP7-022](#)]. As set out in Table 9.8.1 of ES Chapter 9: Ecology and Nature Conservation [APP-034], mitigation for the loss of any roost would be determined post survey, depending on the type of roost located. Given the surveys completed to date, it is anticipated that any roosts that are located in this area will be of low conservation status (such as day roosts for commoner species). Mitigation for the loss of such roosts will be straight forward to accommodate within retained woodland.
- 1.1.4 Notwithstanding this commitment, a number of Interested Parties, including National Highways (via the Statement of Common Ground process – section 2.8.1.2 [[REP5-059](#)]) and the Joint Surrey Councils (in their Local Impact Report – section 7 [[REP1-097](#)]) requested further information on the subject of bat roosts in trees. Therefore, in response to these requests, GAL have brought forward the programme of surveys to determine bat roosts in trees to be removed.
- 1.1.5 This report therefore provides details of all surveys completed up until Deadline 8 within the Order limits of trees that are shown for removal in ES Appendix 8.10.1 Tree Survey Report and Arboricultural Impact Assessment (AIA) [[REP6-038](#), [REP6-040](#), [REP6-042](#), [REP6-044](#), [REP6-046](#), [REP6-048](#)] and ES Appendix 5.3.2 CoCP Annex 6: Outline Arboricultural and Vegetation Method Statement based on the worst case assessment with respect to their bat roost potential. Surveys are on-going with data to be reported once complete.
- 1.1.6 The bat tree surveys that have been undertaken and detailed within this document comprise:
- Ground Level Tree Assessment;

- Aerial Tree Inspection and endoscope inspections; and
- Nocturnal Bat Emergence Surveys.

1.1.7 The methodologies and results of these surveys are described and presented within this report.

1.2 Relevant Legislation

1.2.1 All British bat species are fully protected under Schedule 5 of the Wildlife and Countryside Act 1981. All British bats are also included on Schedule 2 of The Conservation of Habitats and Species Regulations 2017 as European Protected Species of animals. It is an offence to:

- intentionally or recklessly kill, injure or capture bats;
- deliberately or recklessly disturb bats (whether in a roost or not); and
- damage, destroy or obstruct access to bat roosts.

1.2.2 A bat roost includes 'any structure or place which [a bat] uses for shelter or protection'. As bats tend to reuse the same roosts, a roost is protected whether or not bats are present at the time of survey.

1.2.3 A licence will therefore be required by those who carry out any operation that would otherwise result in offences being committed.

1.2.4 The following bat species are listed as being of principal importance for the conservation of biodiversity in England on Section 41 of the Natural Environment and Rural Communities (NERC) Act 2006: barbastelle, Bechstein's, noctule, soprano pipistrelle, brown long-eared, greater horseshoe, and lesser horseshoe.

2 Survey Methodologies

2.1 Ground Level Tree Assessment

- 2.1.1 The Ground Level Tree Assessments (GLTAs) aim to determine whether the trees within the Order Limits of the Project were suitable for roosting bats. The GLTA surveys were undertaken during optimal conditions to maximise chances of seeing Potential Roost Features (PRF's) on trees.
- 2.1.2 The GLTA surveys consisted of a detailed inspection of the trees from the ground, at all angles, from both close-up using binoculars and further away, to look for any features that could be used by roosting bats. Where appropriate an endoscope and high-powered torch was used.
- 2.1.3 To allow identification for any further surveys necessary, trees were tagged with individually-numbered tree tags. These tree tag numbers will be used for all future identification. Note that, since many of the trees surveyed were individuals within tree groups identified in the AIA, the tree numbering used in that document was not suitable for use in the bat surveys.
- 2.1.4 The trees within the Order Limits were assessed for their potential to support roosting bats and whether they would be impacted as a result of the Project through their removal or physical alteration.
- 2.1.5 PRFs may include but are not limited to; woodpecker holes, loose bark, cracks and crevices, broken off limbs and dense ivy.
- 2.1.6 Trees are then classified in accordance with **Table 2-1** based the criteria given in the Bat Surveys for Professional Ecologists: Good Practice Guidelines (BCT, 2023) and professional judgement. However, at this stage, the PRFs are not inspected in detail and therefore, the classification is only an estimate of their potential to support roosting bats.

Table 2-1. Summary of Assessing Potential Roosting Features (BCT, 2023)

Suitability	Description of Roosting Feature
None	Either no Potential Roosting Features (PRF) in the tree or highly unlikely to be any
FAR	Further assessment required to establish if PRFs are present in the tree
PRF-I	PRF is only suitable for individual bats or very small number of bats either due to size or lack of suitable surrounding habitat
PRF-M	PRF is suitable for multiple bats and may therefore be used as a maternity colony.

2.2 Aerial Tree Inspection/Endoscope Inspection

- 2.2.1 The Aerial Tree Inspection (ATI) involves the use of tree climbing or access equipment (ladders, MEWPs) to gain access to PRFs identified through the GLTA surveys. This allows a more detailed assessment of their likely suitability for bats and provides an opportunity to look for more conclusive evidence of bats, such as:
- Live, dead or skeletons of bats;
 - Bat droppings in roof voids (particularly below ridge beam and apex);

- Feeding remains e.g., insect wings;
- Tiny scratches / claw marks around external entry points;
- Urine staining or polishing around external entry point;
- Bat droppings in, around or below entry points of the buildings;
- Audible squeaking at dusk or in warm weather;
- Flies around entry point; and
- Smoothing of surfaces around a cavity.

2.2.2 The surveyor identified surrounding habitat that had any potential to support roosting, commuting and foraging bats. The surrounding habitat can influence roost potential and notes were made on the setting of the trees, their proximity to significant linear habitat features (such as a watercourse, mature hedgerow, wooded lane or an area of woodland) and other factors including artificial lighting.

2.2.3 Ground-based endoscope inspections were also undertaken, where access from ground level to a PRF was possible.

2.2.4 Taking account of the habitat features, the trees were re-assigned a level of roost suitability (**Table 2-1**) based the criteria given in the Bat Surveys for Professional Ecologists: Good Practice Guidelines (BCT, 2023) and professional judgement. The primary objective of this exercise was to identify the need for further detailed bat survey, or to establish whether the PRFs identified from ground level were not suitable for bats.

2.2.5 Trees are then classified in accordance with **Table 2-1** based on evidence of PRFs and, therefore, their potential to support roosting bats. Further ATIs were then undertaken, depending on the number of roosting features and professional judgement with those with many, high-value features subject to two additional ATIs and those with lower numbers of moderate value features subject to one additional ATI.

2.3 Nocturnal Bat Emergence Surveys

2.3.1 In situations where it was unsafe to aerially inspect a tree, emergence surveys are required to assess whether the PRFs are being utilised by roosting bats.

2.3.2 Emergence surveys involve ecologists visiting at dusk to listen and record (using a bat detector and, usually, a night vision aid) and observe bats emerging from their roosts. Information is compiled on species, numbers, access points, roosting locations and flight-paths.

2.3.3 Surveys should usually be carried out using night vision aids (NVA) such as an infra-red camera, as bats often emerge after it is too dark for surveyors to observe them.

2.3.4 The number of surveys, surveyors and the positioning of ecologists were informed by the GLTA which would have identified the PRFs for bats. These features were the focus of the survey and their number an arrangement should inform the number and arrangement of the NVAs/ecologists required to complete the survey.

2.3.5 Surveys started approximately 15 minutes before sunset and ran for at least 1.5 hours after sunset. Survey finishing times were adjusted depending on the observations made during the survey.

3 Results

3.1 Ground Level Tree Assessment

- 3.1.1 The GLTA of the trees identified for removal within the Order Limits under the AIA and the Outline Arboricultural and Vegetation Method Statement (oAVMS) (based on the worst case assessment) was completed by suitably qualified Class 2 Natural England Bat Licence holder, Nicola Pyle (MCIEEM). The GLTA surveys were undertaken between March and July 2024.
- 3.1.2 A total of 192 trees were assessed as part of the GLTA. **The location** and results of the GLTA are presented in Figure 3.1 to Figure 3.4.
- 3.1.3 Table 3-1 below details the results of the GLTA as well as recommendations for further inspection or survey. “N/s” in Table 3-1 means that there were no obvious PRFs but the tree was of a size where they might be present.
- 3.1.4 The location and results of the GLTA are presented in Figure 3.1 to Figure 3.4.

Table 3-1. GLTA Results.

Reference	Tree Species	Tree Height (m)	Description of roosting features	Tree condition	Suitability to support roosting bats	Recommendations for further inspection or survey
Tag 0344	<i>Fraxinus excelsior</i>	10	Rot hole with staining on north side of trunk.	Semi-mature	PRF-I	Aerial Tree Inspection
Tag 0345	<i>Populus tremula</i>	15	Large cavity at base on south-eastern side. Also rot hole in dead branch on East side.	Mature	PRF-I	Aerial Tree Inspection
Tag 0346	<i>Populus sp.</i>	12	Woodpecker holes on trunk.	Semi-mature	PRF-I	Aerial Tree Inspection
Tag 0348	<i>Tilia x europaea</i>	10	Knot hole on east side.	Semi-mature	PRF-I	No further action required
Tag 0351	<i>Populus sp.</i>	10	Rot hole on north-eastern side of trunk.	Semi-mature	PRF-I	Endoscope from ladder
Tag 0353.	<i>Populus sp.</i>	16	Woodpecker hole to west.	Semi-mature	PRF-I	Endoscope from ladder

Reference	Tree Species	Tree Height (m)	Description of roosting features	Tree condition	Suitability to support roosting bats	Recommendations for further inspection or survey
Tag 0354.	<i>Populus sp.</i>	16	2x Woodpecker /rot holes to north approx. 8-12 m high.	Mature	PRF-I	Nocturnal survey
Tag 0355.	<i>Populus sp.</i>	12	Woodpecker hole and cavity to south-west, opposite road approx. 3-4m high.	Semi-mature	PRF-I	Aerial Tree Inspection
Tag 0347	<i>Populus sp.</i>	14	Rot hole at base of branch.	Mature	PRF-I	Aerial Tree Inspection
Tag 0352	<i>Tilia x europaea</i>	10	Possible cavity at top of split on curved trunk.	Immature	PRF-I	Aerial Tree Inspection
No tag.	<i>Populus sp.</i>	12	Wound on westerly branch at 6m is only superficial.	Semi-mature	PRF-I	Aerial Tree Inspection
No tag	<i>Sambucus nigra</i>	10	Group of dead elm stems. loose bark. not safe to ATI. nocturnal survey required.	Mature	PRF-I	Nocturnal survey
Tag 187	<i>Quercus robur</i>	10	N/s	Semi-mature	PRF-I	Aerial Tree Inspection
Tag 0388	<i>Quercus robur</i>	14	Several features on trunk and limbs.	Mature	PRF-I	Aerial Tree Inspection
Tag 172	<i>Quercus robur</i>	10	N/s	Semi-mature	PRF-I	Aerial Tree Inspection
Tag 0337	<i>Fraxinus excelsior</i>	10	N/s	Semi-mature	PRF-I	Endoscope from ground
No tag	<i>Fraxinus excelsior</i>	12	N/s	Semi-mature	PRF-I	No further action required
Tag 0338	<i>Acer pseudoplatanus</i>	14	Knot hole facing path.	Semi-mature	PRF-I	Aerial Tree Inspection
Tag 0342	<i>Acer pseudoplatanus</i>	8	N/s	Semi-mature	PRF-I	Endoscope from ladder
Tag 0383	<i>Quercus robur</i>	12	Several rot holes.	Mature	PRF-I	Aerial Tree Inspection
Tag 0173	<i>Quercus robur</i>	12	N/s	Mature	PRF-I	Aerial Tree Inspection
Tag 0382	<i>Quercus robur</i>	12	Several holes on trunk and limbs.	Mature	PRF-I	Aerial Tree Inspection
Tag 153	<i>Fraxinus excelsior</i>	12	N/s	Mature	PRF-I	Endoscope from ground
Tag 4167	<i>Quercus robur</i>	20	Several features. Cavity at end of limb overhanging road.	Mature	PRF-I	Nocturnal survey
TT 0378	<i>Fraxinus excelsior</i>	10	Large cavity in trunk.	Semi-mature	PRF-I	Endoscope from ground
No tag	<i>Alnus glutinosa</i>	3	Rot hole on south side of trunk.	Dead	PRF-M	Endoscope from ground
Tag 0360	<i>Robinia pseudoacacia</i>	10	Cavity on west branch.	Semi-mature	PRF-I	Aerial Tree Inspection

Reference	Tree Species	Tree Height (m)	Description of roosting features	Tree condition	Suitability to support roosting bats	Recommendations for further inspection or survey
Tag 0358	<i>Sorbus aucuparia</i>	5	Rot hole on southern branch.	Semi-mature	PRF-M	Endoscope from ground
Tag 0359	<i>Unknown tree sp.</i>	10	Group of trees with ivy.	Semi-mature	None	Soft felling
Tag 0321	<i>Fraxinus excelsior</i>	8	Woodpecker hole carpark side	Immature	PRF-I	Endoscope from ladder
Tag 0322	<i>Fraxinus excelsior</i>	8	2 x woodpecker holes on north and west elevations.	Immature	PRF-I	Endoscope from ladder
Tag 0324.	<i>Salix sp.</i>	12	Small rot holes to the north-west approximately 1.5-2m.	Mature	PRF-I	Aerial Tree Inspection
Tag 0325	<i>Alnus glutinosa</i>	15	3x trees together. Several small rot holes at approximately 3-10m to mostly south elevation.	Mature	PRF-I	No further action required
Tag 0326	<i>Alnus glutinosa</i>	12	Rot holes to south-east, next to fence.	Semi-mature	PRF-I	Endoscope from ground
Tag 0328.	<i>Acer pseudoplatanus</i>	6	Dead tree with woodpecker holes on north elevation.	Dead	PRF-I	Endoscope from ladder
No tag	<i>Fraxinus excelsior</i>	6	Woodpecker holes to top of tree east/north facing. Not sure if can ATI.	Dead	PRF-I	Aerial Tree Inspection
Tag 0330	<i>Fraxinus excelsior</i>	8	Dead tree. Several woodpecker holes from 2-8 mts around all elevations.	Dead	PRF-I	Endoscope from ground Nocturnal Survey
Tag 0331	<i>Acer pseudoplatanus</i>	9	Woodpecker hole under limb to west elevation.	Dead	PRF-I	Aerial Tree Inspection
Tag: 0332	<i>Unknown tree sp.</i>	4	Dead tree semi fallen. Woodpecker holes under trunk.	Dead	PRF-I	Endoscope from ladder
Tag 0333.	<i>Acer pseudoplatanus</i>	6	Hole to north.	Dead	PRF-I	Endoscope from ladder
Tag 0334.	<i>Acer pseudoplatanus</i>	20	Cavity to the south approximately 8 m. Knot hole visible from bank.	Mature	FAR	Aerial Tree Inspection
Tag 0335	<i>Alnus glutinosa</i>	10	Between road and fence line. 2 x trunks with woodpecker holes on all elevations.	Semi-mature	PRF-I	Aerial Tree Inspection

Reference	Tree Species	Tree Height (m)	Description of roosting features	Tree condition	Suitability to support roosting bats	Recommendations for further inspection or survey
No tag	<i>Salix sp.</i>	7	TT not available as it's in hotel grounds and as yet, not for removal. 2nd tree in from roundabout.	Immature	PRF-I	Aerial Tree Inspection
Tag 0336	<i>Betula pendula</i>	10	N/s	Mature	PRF-I	Endoscope from ground
Tag 0343	<i>Fraxinus excelsior</i>	20	Several small rot holes around trunk need investigating.	Mature	PRF-I	No further action required
Tag 1844	<i>Acer pseudoplatanus</i>	12	Possible knot hole cavity on central trunk on west side. Also large cavity accessible from ground level.	Mature	PRF-I	Aerial Tree Inspection
Tag 1843	<i>Acer pseudoplatanus</i>	12	Large rot cavity on west side, visible from footpath. Accessible from ground level.	Mature	PRF-I	Endoscope from ladder
Tag 1840	<i>Acer pseudoplatanus</i>	12	Lifting bark.	Semi-mature	PRF-I	Nocturnal survey
Tag 0356.	<i>Salix sp.</i>	6	Willow on road edge. Investigate split.	Immature	PRF-I	Endoscope from ground
Tag 0841	<i>Quercus robur</i>	10	Multiple splits and rot cavities. Not practical to endoscope splits. Emergence survey best.	Mature	PRF-M	Aerial Tree Inspection Nocturnal survey
Tag 0842.	<i>Quercus robur</i>	10	Split limb at top to be inspected.	Mature	PRF-M	Aerial Tree Inspection
Tag 0357	<i>Fraxinus excelsior</i>	10	Knot hole on south-west side with possible rot hole.	Mature	None	No further action required
Tag 0361.	<i>Fraxinus angustifolia</i>	10	Possible cavity on trunk, east side, 8m up.	Semi-mature	PRF-M	No further action required
Tag:0362	<i>Salix alba</i>	12	Splits in lower limbs to endoscope. Splits further up. Mostly riverside.	Mature	PRF-I	Aerial Tree Inspection
Tag 0363	<i>Fraxinus excelsior</i>	16	Ivy covered. Limb to the north has knot hole/split above.	Mature	PRF-I	Aerial Tree Inspection
Tag 0364	<i>Fraxinus excelsior</i>	14	Multi trunk ash. Trunk cavity's around top of bank level.	Semi-mature	PRF-I	Endoscope from ground
Tag 0365.	<i>Prunus avium</i>	5	Small crevice/hole to check.	Mature	PRF-I	Endoscope from ladder

Reference	Tree Species	Tree Height (m)	Description of roosting features	Tree condition	Suitability to support roosting bats	Recommendations for further inspection or survey
Tag 0366	<i>Prunus avium</i>	5	Cavity to the south. Fourth tree down from north.	Mature	PRF-I	Endoscope from ladder
Tag 0367	<i>Prunus avium</i>	6	Cavity to the south-east on truck. Row of cherry trees.	Mature	PRF-I	Endoscope from ground
Tag 0368	<i>Prunus avium</i>	6	Split on limb to check.	Mature	PRF-I	Endoscope from ladder
No tag	<i>Salix sp.</i>	12	Spreading multi stemmed willow. precautionary ATI.	Mature	FAR	Aerial Tree Inspection
Tag 341	<i>Aesculus hippocastanum</i>	12	Mostly dead tree. Lower section can be climbed. Extensive areas of loose bark.	Mature	PRF-I	Aerial Tree Inspection
Tag 167	<i>Salix sp.</i>	13	N/s	Mature	PRF-I	Endoscope from ladder
Tag 168	<i>Fraxinus excelsior</i>	15	N/s	Semi-mature	PRF-I	Endoscope from ladder
Tag 0166.	<i>Acer pseudoplatanus</i>	17	Lifting bark on one stem.	Semi-mature	PRF-I	Aerial Tree Inspection
No tag	<i>Quercus robur</i>	18	Large mature tree. Precautionary ATI.	Mature	FAR	Aerial Tree Inspection
No tag	<i>Prunus avium</i>	12	Cavity in trunk near ground facing north.	Mature	PRF-I	Endoscope from ground
No tag	<i>Quercus robur</i>	15	No Data.	Mature	FAR	No further action required
No tag	<i>Cupressus x leylandii</i>	10	2 branches have partially snapped at the base and are horizontal resulting splintered crevices.	Mature	PRF-I	Endoscope from ground
No tag	<i>Prunus avium</i>	12	Area of peeled and loose bark on stem facing the road.	Mature	PRF-I	Endoscope from ladder
No tag	<i>Fraxinus excelsior</i>	17	Large callus roll on stem may have cavity at top.	Mature	PRF-I	Aerial Tree Inspection
No tag	<i>Fraxinus excelsior</i>	7	Main stem has snapped out. there are numerous crevices at the site of the snap which may provide shelter.	Mature	FAR	Endoscope from ladder
No tag	<i>Quercus robur</i>	13	No Data.	Mature	PRF-I	Endoscope from ground
No tag	<i>Acer campestre</i>	8	No Data.	Semi-mature	PRF-I	Endoscope from ground

Reference	Tree Species	Tree Height (m)	Description of roosting features	Tree condition	Suitability to support roosting bats	Recommendations for further inspection or survey
No tag	<i>Fraxinus excelsior</i>	14	No Data.	Semi-mature	PRF-I	No further action required
No tag	<i>Fraxinus excelsior</i>	3	Snapped out ash tree has possible features.	Dead	FAR	Endoscope from ladder
No tag	<i>Salix caprea</i>	5	Small branch cavity can be seen on north-western stem at 3m.	Mature	PRF-I	No further action required
No tag	<i>Fraxinus excelsior</i>	14	Multi stemmed ash with areas of thick ivy on several of the stems that could be used by bats.	Mature	FAR	Nocturnal survey
Tag 0161	<i>Populus sp.</i>	20	Precautionary ATI of pollarded tree.	Mature	PRF-I	Aerial Tree Inspection
No tag	<i>Populus sp.</i>	18	Pollarded Poplar with hollow at top.	Mature	None	No further action required
Tag 160.	<i>Populus sp.</i>	24	2 cavities in canopy visible from pavement.	Mature	PRF-I	Aerial Tree Inspection
Tag 0165	<i>Acer campestre</i>	9	N/s	Mature	PRF-I	Endoscope from ground
No tag	<i>Fraxinus excelsior</i>	17	Dense ivy stems and plates on much of the bottom half of tree.	Mature	PRF-I	Nocturnal survey
No tag	<i>Populus sp.</i>	16	Potential PRF's in canopy.	Mature	PRF-I	No further action required
Tag 0369.	<i>Fraxinus excelsior</i>	16	Ash bottom of bank (ditch). Couple of Knot holes to check approx 6m.	Mature	PRF-I	No further action required
Tag 0370	<i>Salix sp.</i>	6	2 x adjacent willows in ditch. Crevice in tagged trunk (torch died). Knot hole on trunk behind where branches cross.	Semi-mature	PRF-I	Endoscope from ground
Tag 0372	<i>Alnus glutinosa</i>	16	Triple stem tree. Road side of bank. Several knot holes to inspect on all three trunks.	Mature	PRF-I	Aerial Tree Inspection
Tag 0373.	<i>Salix caprea</i>	12	Willow over hanging river. Crack under lower limb.	Mature	PRF-I	Endoscope from ground

Reference	Tree Species	Tree Height (m)	Description of roosting features	Tree condition	Suitability to support roosting bats	Recommendations for further inspection or survey
No tag	<i>Salix sp.</i>	7	2x Willow trees multi trunked. In ditch. Several holes/cavities to check on both.	Semi-mature	PRF-I	Endoscope from ground
Tag 0375	<i>Salix sp.</i>	10	Multi trunked willow in ditch. Several cavities in lower limbs/trunks. 1 cavity @approx 2m.	Mature	PRF-I	Endoscope from ground
Tag 0376	<i>Maple</i>	12	Fused branches, to check crevices in between.	Mature	PRF-I	Aerial Tree Inspection
Tag 0377	<i>Acer campestre</i>	14	Splits in trunk, lifted bark.	Mature	PRF-I	Endoscope from ground
Tag 0379	<i>Quercus robur</i>	18	Crack in trunk on west side.	Mature	PRF-I	Aerial Tree Inspection
Tag 0381	<i>Quercus robur</i>	16	Cavity in north-western branch.	Mature	PRF-I	Aerial Tree Inspection
No tag	<i>Populus sp.</i>	14	Rot holes.	Mature	PRF-I	Aerial Tree Inspection
Tag 0579.	<i>Fraxinus excelsior</i>	10	N/s	Semi-mature	PRF-I	Aerial Tree Inspection
Tag 586	<i>Quercus robur</i>	12	Mature oak. Rot holes at end of branch overhanging car park. Rot hole on trunk 2.5m, car park side.	Mature	PRF-I	Aerial Tree Inspection
Tag 585	<i>Prunus avium</i>	10	Cavity under lifting bark in east side.	Mature	PRF-I	Endoscope from ground
Tag 567	<i>Acer campestre</i>	9	N/s	Mature	PRF-I	Endoscope from ground
Tag 0582.	<i>Unknown tree sp.</i>	5	Dead half fallen tree. Rot holes/cavities to check.	Dead	PRF-I	Endoscope from ground
Tag 0591	<i>Quercus robur</i>	10	Multiple cavities, split limbs.	Mature	PRF-I	Aerial Tree Inspection
Tag 0387,	<i>Populus sp.</i>	14	Woodpecker hole.	Mature	PRF-I	Aerial Tree Inspection
Tag 0391,	<i>Quercus robur</i>	12	One cavity.	Semi-mature	PRF-I	Endoscope from ground
Tag 0392	<i>Prunus avium</i>	8	Striping bark, broken limbs and possible cavity.	Mature	PRF-I	Aerial Tree Inspection
Tag 0393	<i>Quercus robur</i>	10	Cavity on trunk.	Mature	PRF-I	Endoscope from ladder
Tag 0394,	<i>Salix sp.</i>	10	Splits in bark.	Mature	PRF-I	No further action required
Tag 0396	<i>Quercus robur</i>	12	Crevice on limb.	Mature	PRF-I	Aerial Tree Inspection

Reference	Tree Species	Tree Height (m)	Description of roosting features	Tree condition	Suitability to support roosting bats	Recommendations for further inspection or survey
Tag 199	<i>Salix sp.</i>	7	Multi stemmed, spreading willow with several cavities in stems.	Immature	PRF-I	Endoscope from ground
No tag	<i>Salix sp.</i>	7	No Data	Mature	PRF-I	Endoscope from ground
No tag	<i>Salix sp.</i>	6	Between pavement and ditch.	Mature	PRF-I	Endoscope from ground
Tag 198.	<i>Acer pseudoplatanus</i>	13	Small areas of lifted bark, visible using a bright torch.	Dead	PRF-I	Endoscope from ladder
Tag 196	<i>Salix sp.</i>	9	Collapsed willow beside ditch.	Mature	PRF-I	Endoscope from ladder
Tag 195	<i>Salix sp.</i>	9	Collapsed willow beside ditch.	Mature	PRF-I	Endoscope from ground
Tag 193.	<i>Salix sp.</i>	8	3 stems growing from ditch.	Semi-mature	PRF-I	Endoscope from ladder
Tag 194	<i>Salix sp.</i>	7	N/s	Semi-mature	PRF-I	Endoscope from ground
Tag 197	<i>Salix sp.</i>	15	N/s	Mature	PRF-I	Aerial Tree Inspection
Tag 99	<i>Salix sp.</i>	9	N/s	Mature	PRF-I	Endoscope from ground
Tag 188	<i>Salix sp.</i>	4	N/s	Mature	PRF-I	Endoscope from ground
Tag 0397	<i>Crataegus monogyna</i>	4	N/s	Semi-mature	PRF-I	Endoscope from ground
Tag 184	<i>Quercus robur</i>	12	N/s	Semi-mature	PRF-I	Aerial Tree Inspection
Tag 0398.	<i>Quercus robur</i>	8	Rot cavity on trunk.	Semi-mature	PRF-I	Endoscope from ground
Tag 0399.	<i>Quercus robur</i>	10	Cavity between two fused branches over path.	Semi-mature	PRF-I	No further action required
Tag 192	<i>Alnus glutinosa</i>	15	Multi stemmed alder beside ditch.	Mature	PRF-I	Endoscope from ladder
Tag 191.	<i>Ulmus procera</i>	13	Cluster of dead standing trees.	Dead	PRF-I	Endoscope from ladder
Tag 190.	<i>Alnus glutinosa</i>	15	Multi stemmed alder beside path.	Mature	PRF-I	Aerial Tree Inspection
Tag 189.	<i>Ulmus procera</i>	11	Collection of dead standing elms between path and pavement.	Dead	PRF-I	Endoscope from ladder
Tag 186	<i>Ulmus procera</i>	16	Group of 5 dead standing elms between pavement and path.	Dead	PRF-I	Endoscope from ladder
Tag 185.	<i>Quercus robur</i>	25	Tri stemmed oak beside path.	Mature	PRF-I	Aerial Tree Inspection
Tag 183.	<i>Salix sp.</i>	7	Growing from ditch.	Mature	PRF-I	Endoscope from ground
Tag 181	<i>Salix sp.</i>	4	Collapsed willow over ditch.	Mature	PRF-I	Endoscope from ground
Tag 179	<i>Salix sp.</i>	4.5	Semi collapsed tree in ditch.	Mature	PRF-I	Endoscope from ground

Reference	Tree Species	Tree Height (m)	Description of roosting features	Tree condition	Suitability to support roosting bats	Recommendations for further inspection or survey
Tag 177	<i>Fraxinus excelsior</i>	12	N/s	Semi-mature	PRF-I	Aerial Tree Inspection
Tag 174.	<i>Acer campestre</i>	7	Unsafe for ladder. Tree overhanging ditch. Second cavity at approximately 2.5m.	Mature	PRF-I	Nocturnal survey
Tag 0001	<i>Fraxinus excelsior</i>	10	Rot hole at end of branch facing car park (west aspect). Can't see how far in it goes.	Mature	PRF-I	Aerial Tree Inspection
Tag 0002.	<i>Ulmus procera</i>	8	Flaking bark. Emergence survey.	Dead	PRF-I	Endoscope from ladder
Tag 0003.	<i>Quercus robur</i>	12	No visible features from ground. Potential for features in canopy not visible from ground.	Mature	PRF-I	Aerial Tree Inspection
Tag 0175.	<i>Salix sp.</i>	8	Split branch overhanging ditch, and rot cavity on trunk.	Semi-mature	PRF-I	Aerial Tree Inspection
Tag 0004.	<i>Quercus robur</i>	14	Multiple cavities. overhanging river.	Mature	PRF-I	Aerial Tree Inspection
Tag 182.	<i>Quercus robur</i>	17	N/s.	Mature	PRF-I	Aerial Tree Inspection
Tag 180.	<i>Salix sp.</i>	6	Beside ditch.	Mature	PRF-I	Endoscope from ground
Tag 178	<i>Betula pendula</i>	6	Growing diagonally from ditch.	Semi-mature	PRF-I	Endoscope from ground
Tag 176.	<i>Salix sp.</i>	10	Tri stemmed willow in ditch.	Mature	PRF-I	Aerial Tree Inspection
Tag 175.	<i>Salix sp.</i>	8	Beside ditch.	Mature	PRF-I	Endoscope from ladder
Tag 0005	<i>Betula pendula</i>	8	N/s	Semi-mature	PRF-I	Aerial Tree Inspection
Tag 0008	<i>Quercus robur</i>	14	Rot hole and splits on south-eastern branch.	Mature	PRF-I	Aerial Tree Inspection
Tag 0007.	<i>Quercus robur</i>	10	No visible features but moderate size oak. May have features in canopy.	Mature	None	Aerial Tree Inspection
Tag 0009	<i>Salix sp.</i>	6	Wonky tree, two rot holes (0.5m and 1.5m high).	Semi-mature	PRF-I	Endoscope from ground
Tag 159.	<i>Quercus robur</i>	14	Mature oak. Large rot cavity at end of eastern branch.	Mature	PRF-I	Aerial Tree Inspection
Tag 0171	<i>Quercus robur</i>	15	N/s	Mature	PRF-I	Aerial Tree Inspection

Reference	Tree Species	Tree Height (m)	Description of roosting features	Tree condition	Suitability to support roosting bats	Recommendations for further inspection or survey
Tag 0169.	<i>Quercus robur</i>	18	N/s	Mature	PRF-I	Aerial Tree Inspection
Tag 0010	<i>Acer campestre</i>	6	Over hanging ditch. Access through trees to the north. Rot cavity at base, endoscope from ground.	Mature	PRF-I	Endoscope from ground
Tag 0011.	<i>Acer campestre</i>	6	Large rot hole on trunk. Access through trees to north.	Mature	PRF-I	Endoscope from ground
Tag 170	<i>Quercus robur</i>	8	Two rot holes on east branch. Visible from grass area to north but can't access to tag due to dense bramble.	Mature	PRF-I	Aerial Tree Inspection
Tag 0054.	<i>Quercus robur</i>	12	2+ potential cavities. Not safe to ATI.	Dead	PRF-I	Nocturnal survey
Tag 0012.	<i>Quercus robur</i>	16	Woodpecker hole base of dead beach south-west elevation.	Mature	PRF-I	No further action required
Tag 4509	<i>Quercus robur</i>	12	Triple trunked, several features.	Mature	PRF-I	Aerial Tree Inspection
Tag 0013.	<i>Quercus robur</i>	14	Split in branch to check.	Mature	PRF-I	Aerial Tree Inspection
Tag 0014.	<i>Quercus robur</i>	16	One feature observed from ground. Large multi trunked tree. Potentially more features further up.	Mature	PRF-I	Aerial Tree Inspection
Tag 0015.	<i>Betula pendula</i>	8	Rot hole on east side of trunk, tree is on west side of group of trees.	Semi-mature	PRF-I	No further action required
Tag 0017	<i>Quercus robur</i>	12	Rot hole on south-eastern branch.	Mature	PRF-I	Aerial Tree Inspection
Tag 0016.	<i>Quercus robur</i>	12	Rot hole on south-eastern branch.	Mature	PRF-I	Aerial Tree Inspection
Tag 0018.	<i>Quercus robur</i>	16	Rot hole on trunk. Tree currently due to be retained.	Mature	PRF-I	Aerial Tree Inspection
Tag 0019	<i>Acer campestre</i>	8	Small rot hole on truck, right of tag.	Mature	PRF-I	Aerial Tree Inspection
Tag 0020	<i>Carpinus betulus</i>	8	Multi-trunked. Rot hole on trunk.	Mature	PRF-I	Aerial Tree Inspection
Tag 0021	<i>Quercus robur</i>	14	Mature oak with dense ivy. No visible features.	Mature	PRF-I	Aerial Tree Inspection
Tag 0022	<i>Quercus robur</i>	12	Mature oak by footpath with hibernation bat box on north side.	Mature	PRF-I	Aerial Tree Inspection

Reference	Tree Species	Tree Height (m)	Description of roosting features	Tree condition	Suitability to support roosting bats	Recommendations for further inspection or survey
Tag 0023	<i>Quercus robur</i>	14	Mature oak with dense ivy.	Mature	PRF-I	Aerial Tree Inspection
Tag 0024	<i>Quercus robur</i>	14	Mature oak. No visible features, but likely to have some in canopy.	Mature	PRF-I	Aerial Tree Inspection
Tag 164	<i>Quercus robur</i>	17	N/s	Mature	PRF-I	Endoscope from ground
Tag 163	<i>Quercus robur</i>	12	N/s	Mature	PRF-I	Aerial Tree Inspection
Tag 162.	<i>Quercus robur</i>	12	Covered in light ivy.	Mature	FAR	Nocturnal survey
Tag 983	<i>Quercus robur</i>	12	N/s	Mature	PRF-I	Aerial Tree Inspection
No tag	<i>Quercus robur</i>	8	N/s	Semi-mature	PRF-I	Endoscope from ground
Tag 0025.	<i>Quercus robur</i>	12	Small rot hole on limb to check to the south-west.	Mature	PRF-I	Aerial Tree Inspection
Tag 0026.	<i>Quercus robur</i>	10	Damage to base of trunk and with cavity to endoscope. Several rot holes and splits seen on dead limbs to check at height.	Mature	PRF-I	Aerial Tree Inspection
Tag 2679	<i>Fraxinus excelsior</i>	17	N/s	Mature	PRF-I	Aerial Tree Inspection
Tag 0937	<i>Quercus robur</i>	20	N/s	Mature	PRF-I	Aerial Tree Inspection
Tag 2675	<i>Pinus sp.</i>	16	N/s	Mature	PRF-I	Aerial Tree Inspection
Tag 4511	<i>Quercus robur</i>	11	N/s	Mature	PRF-I	Aerial Tree Inspection
Tag 0989	<i>Populus sp.</i>	17	N/s	Mature	PRF-I	Endoscope from ladder
Tag 158.	<i>Quercus robur</i>	14	Tree is surrounded by scrub but can be accessed from North.	Mature	PRF-I	Aerial Tree Inspection
Tag 156	<i>Quercus robur</i>	12	N/s	Mature	FAR	Aerial Tree Inspection
Tag 154	<i>Quercus robur</i>	12	N/s	Mature	PRF-I	Aerial Tree Inspection
Tag 157	<i>Quercus robur</i>	14	N/s	Mature	PRF-I	Aerial Tree Inspection
Tag 155	<i>Quercus robur</i>	11	N/s	Mature	PRF-I	Aerial Tree Inspection
Tag 0027	<i>Quercus robur</i>	3	Folded bark and crevice to west side.	Semi-mature	PRF-I	Endoscope from ladder
Tag 0028	<i>Quercus robur</i>	8	Folded bark on one limb to the south-east. 2 x small crevices to check.	Semi-mature	PRF-I	Aerial Tree Inspection

Reference	Tree Species	Tree Height (m)	Description of roosting features	Tree condition	Suitability to support roosting bats	Recommendations for further inspection or survey
Tag 0179	<i>Salix sp.</i>	12	Split trunk over hanging ditch. 2 x surveyors.	Semi-mature	PRF-I	Nocturnal survey
Tag 0181	<i>Salix sp.</i>	3	Access from riverside path. 1x surveyor.	Mature	PRF-I	Nocturnal survey

3.2 Aerial Tree /Endoscope Inspection

3.2.1 The Aerial Tree Inspections/endoscope inspections were completed between April and July 2024 by licensed bat ecologists and qualified tree climbers Chris Long and Jon Sydney.

3.2.2 Of the 192 trees subject to the GLTA, a total of 174 trees required further inspections. The results of the aerial tree inspections completed to date (Deadline 8) are shown in **Table 3-2**.

3.2.3 The location and results of the further surveys (either Aerial Tree Inspections or endoscope inspections) completed to date (Deadline 8) are presented in Figure 3.5 to Figure 3.8. Those trees with “N/a” in Table 3-2 have not yet had 2nd/3rd ATIs, as necessary.

3.2.4 No bat roosts were identified during the aerial tree inspections.

Table 3-2. Aerial Tree Inspection Results.

Reference	Tree Species	Tree Height (m)	Description of roosting features	Tree condition	Suitability to support roosting bats (GLTA)	Results after ATI #1	Results after ATI #2	Results after ATI #3
Tag 0344	<i>Fraxinus excelsior</i>	10	Rot hole with staining on north side of trunk.	Semi-mature	PRF-I	PRF-I. First and only ATI completed.	N/a	N/a

Reference	Tree Species	Tree Height (m)	Description of roosting features	Tree condition	Suitability to support roosting bats (GLTA)	Results after ATI #1	Results after ATI #2	Results after ATI #3
Tag 0345	<i>Populus tremula</i>	15	Large cavity at base on south-eastern side. Also rot hole in dead branch on East side.	Mature	PRF-I	PRF-M	1 further feature added	N/a
Tag 0346	<i>Populus sp.</i>	12	Woodpecker holes on trunk.	Semi-mature	PRF-I	PRF-M	No bats, no evidence	N/a
Tag 0348	<i>Tilia x europaea</i>	10	Knot hole on east side.	Semi-mature	PRF-I	None	N/a	N/a
Tag 0351	<i>Populus sp.</i>	10	Rot hole on north-eastern side of trunk.	Semi-mature	PRF-I	PRF-I	No bats, no evidence	N/a
Tag 0353.	<i>Populus sp.</i>	16	Woodpecker hole to west.	Semi-mature	PRF-I	PRF-M	No change	N/a
Tag 0354.	<i>Populus sp.</i>	16	2x Woodpecker /rot holes to north approx. 8-12 m high.	Mature	PRF-I	Unsuitable for ATI. Nocturnal survey.	N/a	N/a
Tag 0355.	<i>Populus sp.</i>	12	Woodpecker hole and cavity to south-west, opposite road approx. 3-4m high.	Semi-mature	PRF-I	PRF-M	No bats, no evidence	N/a
Tag 0347	<i>Populus sp.</i>	14	Rot hole at base of branch.	Mature	PRF-I	PRF-I	No bats, no evidence	N/a
Tag 0352	<i>Tilia x europaea</i>	10	Possible cavity at top of split on curved trunk.	Immature	PRF-I	PRF-I. First and only ATI completed.	N/a	N/a
No tag.	<i>Populus sp.</i>	12	Wound on westerly branch at 6m is only superficial.	Semi-mature	PRF-I	None	N/a	N/a
No tag	<i>Sambucus nigra</i>	10	080424: group of dead elm stems. loose bark.	Mature	PRF-I	Unsuitable for ATI. Nocturnal survey	N/a	N/a

Reference	Tree Species	Tree Height (m)	Description of roosting features	Tree condition	Suitability to support roosting bats (GLTA)	Results after ATI #1	Results after ATI #2	Results after ATI #3
			not safe to ATI. nocturnal survey required					
Tag 187	<i>Quercus robur</i>	10	N/s	Semi-mature	PRF-I	PRF-I	No bats, no evidence	No
Tag 0388	<i>Quercus robur</i>	14	Several features on trunk and limbs.	Mature	PRF-I	PRF-M	No Data	No Data
No tag	<i>Quercus robur</i>	10	Tree not found. No information.	Mature	None	None	N/a	N/a
No tag	<i>Quercus robur</i>	10	Tree not found. No information.	Immature	None	None	N/a	N/a
Tag 172	<i>Quercus robur</i>	10	N/s	Semi-mature	PRF-I	PRF-I	No bats, no evidence	N/a
Tag 0337	<i>Fraxinus excelsior</i>	10	N/s	Semi-mature	PRF-I	PRF-M	No bats, no evidence	N/a
No tag	<i>Fraxinus excelsior</i>	12	N/s	Semi-mature	PRF-I	None	N/a	N/a
Tag 0338	<i>Acer pseudoplatanus</i>	14	Knot hole facing path.	Semi-mature	PRF-I	PRF-I	N/a	N/a
Tag 0342	<i>Acer pseudoplatanus</i>	8	N/s	Semi-mature	PRF-I	PRF-I	No bats, no evidence	N/a
Tag 0383	<i>Quercus robur</i>	12	Several rot holes.	Mature	PRF-I	PRF-I	No bats, no evidence. 1 new mod/ PRF-I feature added	N/a
Tag 0173	<i>Quercus robur</i>	12	N/s	Mature	PRF-I	PRF-I. First and only ATI completed.	N/a	N/a
Tag 0382	<i>Quercus robur</i>	12	Several holes on trunk and limbs.	Mature	PRF-I	PRF-M	No Data	No Data

Reference	Tree Species	Tree Height (m)	Description of roosting features	Tree condition	Suitability to support roosting bats (GLTA)	Results after ATI #1	Results after ATI #2	Results after ATI #3
Tag 153	<i>Fraxinus excelsior</i>	12	N/s	Mature	PRF-I	PRF-I	No bats, no evidence	N/a
Tag 4167	<i>Quercus robur</i>	20	Several features. Cavity at end of limb overhanging road.	Mature	PRF-I	Unsuitable for ATI. Nocturnal Survey	N/a	N/a
TT 0378	<i>Fraxinus excelsior</i>	10	Large cavity in trunk.	Semi-mature	PRF-I	PRF-M	No bats, no evidence	N/a
No tag	<i>Alnus glutinosa</i>	3	Rot hole on south side of trunk	Dead	PRF-M	PRF-I	No bats, no evidence. Birds nest no longer active	N/a
Tag 0360	<i>Robinia pseudoacacia</i>	10	Cavity on west branch.	Semi-mature	PRF-I	PRF-I. First and only ATI completed.	N/a	N/a
Tag 0358	<i>Sorbus aucuparia</i>	5	Rot hole on southern branch	Semi-mature	PRF-M	PRF-I. First and only inspection completed.	N/a	N/a
Tag 0359	<i>Unknown tree sp.</i>	10	Group of trees with ivy	Semi-mature	None	None	N/a	N/a
Tag 0321	<i>Fraxinus excelsior</i>	8	Woodpecker hole carpark side	Immature	PRF-I	PRF-M	1 moderate roost feature	N/a
Tag 0322	<i>Fraxinus excelsior</i>	8	2 x woodpecker holes on north and west elevations	Immature	PRF-I	PRF-I	No bats, no evidence	N/a
Tag 0324.	<i>Salix sp.</i>	12	Small rot holes to the north-west approximately 1.5-2 m	Mature	PRF-I	PRF-M	No bats, no evidence	N/a
Tag 0325	<i>Alnus glutinosa</i>	15	3x trees together. Several small rot holes at	Mature	PRF-I	None	N/a	N/a

Reference	Tree Species	Tree Height (m)	Description of roosting features	Tree condition	Suitability to support roosting bats (GLTA)	Results after ATI #1	Results after ATI #2	Results after ATI #3
			approximately 3-10m to mostly south elevation					
Tag 0326	<i>Alnus glutinosa</i>	12	Rot holes to south-east, next to fence	Semi-mature	PRF-I	PRF-M	No bats, no evidence	N/a
Tag 0328.	<i>Acer pseudoplatanus</i>	6	Dead tree with woodpecker holes on north elevation	Dead	PRF-I	PRF-M	No change	N/a
No tag	<i>Fraxinus excelsior</i>	6	Woodpecker holes to top of tree east/north facing. Not sure if can ATI	Dead	PRF-I	PRF-I	No bats, no evidence	N/a
Tag 0330	<i>Fraxinus excelsior</i>	8	Dead tree. Several woodpecker holes from 2-8 mts around all elevations.	Dead	PRF-I	PRF-M	No bats, no evidence	N/a
Tag 0331	<i>Acer pseudoplatanus</i>	9	Woodpecker hole under limb to west elevation.	Dead	PRF-I	PRF-M	No change	N/a
Tag: 0332	<i>Unknown tree sp.</i>	4	Dead tree semi fallen. Woodpecker holes under trunk.	Dead	PRF-I	PRF-M	No change	N/a
Tag 0333.	<i>Acer pseudoplatanus</i>	6	Hole to north.	Dead	PRF-I	PRF-M	No change	N/a
Tag 0334.	<i>Acer pseudoplatanus</i>	20	Cavity to the south approximately 8 m. Knot hole visible from bank	Mature	FAR	None	N/a	N/a
Tag 0335	<i>Alnus glutinosa</i>	10	Between road and fence line. 2 x trunks with woodpecker holes on all elevations.	Semi-mature	PRF-I	PRF-M	No change	N/a

Reference	Tree Species	Tree Height (m)	Description of roosting features	Tree condition	Suitability to support roosting bats (GLTA)	Results after ATI #1	Results after ATI #2	Results after ATI #3
No tag	<i>Salix sp.</i>	7	TT not available as it's in hotel grounds and as yet, not for removal. 2nd tree in from roundabout	Immature	PRF-I	PRF-I. First and only ATI completed.	N/a	N/a
Tag 0336	<i>Betula pendula</i>	10	N/s	Mature	PRF-I	PRF-I. First and only inspection completed.	N/a	N/a
Tag 0343	<i>Fraxinus excelsior</i>	20	Several small rot holes around trunk need investigating.	Mature	PRF-I	None	N/a	N/a
Tag 1844	<i>Acer pseudoplatanus</i>	12	Possible knot hole cavity on central trunk on west side. Also large cavity accessible from ground level.	Mature	PRF-I	PRF-M	No bats, no evidence	N/a
Tag 1843	<i>Acer pseudoplatanus</i>	12	Large rot cavity on west side, visible from footpath. Accessible from ground level.	Mature	PRF-I	PRF-I	No bats, no evidence	N/a
Tag 1840	<i>Acer pseudoplatanus</i>	12	Lifting bark.	Semi-mature	PRF-I	PRF-I	No bats, no evidence	N/a
Tag 0356.	<i>Salix sp.</i>	6	Willow on road edge. Investigate split	Immature	PRF-I	PRF-M	No bats, no evidence	N/a
Tag 0841	<i>Quercus robur</i>	10	Multiple splits and rot cavities. Not practical to endoscope splits. Emergence survey best.	Mature	PRF-M	PRF-M	No change	N/a
Tag 0842.	<i>Quercus robur</i>	10	Split limb at top to be inspected	Mature	PRF-M	PRF-M	No change	N/a

Reference	Tree Species	Tree Height (m)	Description of roosting features	Tree condition	Suitability to support roosting bats (GLTA)	Results after ATI #1	Results after ATI #2	Results after ATI #3
Tag 0357	<i>Fraxinus excelsior</i>	10	Knot hole on south-west side with possible rot hole.	Mature	None	None	N/a	N/a
Tag 0361.	<i>Fraxinus angustifolia</i>	10	Possible cavity on trunk, east side, 8m up.	Semi-mature	PRF-M	None	N/a	N/a
Tag:0362	<i>Salix alba</i>	12	Splits in lower limbs to endoscope. Splits further up. Mostly riverside	Mature	PRF-I	PRF-M	No change	N/a
Tag 0363	<i>Fraxinus excelsior</i>	16	Ivy covered. Limb to the north has knot hole/split above.	Mature	PRF-I	PRF-I. First and only ATI completed.	N/a	N/a
Tag 0364	<i>Fraxinus excelsior</i>	14	Multi trunk ash. Trunk cavity's around top of bank level	Semi-mature	PRF-I	PRF-M	N/a	N/a
Tag 0365.	<i>Prunus avium</i>	5	Small crevice/hole to check	Mature	PRF-I	PRF-I	N/a	N/a
Tag 0366	<i>Prunus avium</i>	5	Cavity to the south. Fourth tree down from north.	Mature	PRF-I	PRF-M	No bats, no evidence	N/a
Tag 0367	<i>Prunus avium</i>	6	Cavity to the south-east on truck. Row of cherry trees.	Mature	PRF-I	PRF-I	No bats, no evidence	N/a
Tag 0368	<i>Prunus avium</i>	6	Split on limb to check.	Mature	PRF-I	PRF-I	No bats, no evidence	N/a
No tag	<i>Salix sp.</i>	12	Spreading multi stemmed willow. precautionary ATI.	Mature	FAR	To be completed	N/a	N/a
Tag 341	<i>Aesculus hippocastanum</i>	12	Mostly dead tree. Lower section can be climbed.	Mature	PRF-I	PRF-M	No change	N/a

Reference	Tree Species	Tree Height (m)	Description of roosting features	Tree condition	Suitability to support roosting bats (GLTA)	Results after ATI #1	Results after ATI #2	Results after ATI #3
			Extensive areas of loose bark.					
Tag 167	<i>Salix sp.</i>	13	N/s	Mature	PRF-I	PRF-I. First and only inspection completed.	N/a	N/a
Tag 168	<i>Fraxinus excelsior</i>	15	N/s	Semi-mature	PRF-I	To be completed	2nd ATI 050624: no bats , no evidence	N/a
Tag 0166.	<i>Acer pseudoplatanus</i>	17	Lifting bark on one stem	Semi-mature	PRF-I	PRF-M	No change	N/a
No tag	<i>Quercus robur</i>	18	Large mature tree. Precautionary ATI	Mature	FAR	None	N/a	N/a
No tag	<i>Prunus avium</i>	12	Cavity in trunk near ground facing north	Mature	PRF-I	None	N/a	N/a
No tag	<i>Quercus robur</i>	15	No Data	Mature	FAR	None	N/a	N/a
No tag	<i>Cupressus x leylandii</i>	10	2 branches have partially snapped at the base and are horizontal resulting splintered crevices	Mature	PRF-I	None	N/a	N/a
No tag	<i>Prunus avium</i>	12	Area of peeled and loose bark on stem facing the road	Mature	PRF-I	PRF-I. First and only inspection completed.	N/a	N/a
No tag	<i>Fraxinus excelsior</i>	17	Large callus roll on stem may have cavity at top	Mature	PRF-I	None	N/a	N/a
No tag	<i>Fraxinus excelsior</i>	7	Main stem has snapped out. there are numerous crevices at the site of the snap which may provide shelter	Mature	FAR	PRF-I. First and only inspection completed.	N/a	N/a

Reference	Tree Species	Tree Height (m)	Description of roosting features	Tree condition	Suitability to support roosting bats (GLTA)	Results after ATI #1	Results after ATI #2	Results after ATI #3
No tag	<i>Quercus robur</i>	13	No Data	Mature	PRF-I	PRF-I. First and only inspection completed.	N/a	N/a
No tag	<i>Acer campestre</i>	8	No Data	Semi-mature	PRF-I	PRF-I. First and only inspection completed.	N/a	N/a
No tag	<i>Fraxinus excelsior</i>	14	No Data	Semi-mature	PRF-I	None	N/a	N/a
No tag	<i>Fraxinus excelsior</i>	3	Snapped out ash tree has possible features	Dead	FAR	PRF-I. First and only inspection completed.	N/a	N/a
No tag	<i>Salix caprea</i>	5	Small branch cavity can be seen on north-western stem at 3m.	Mature	PRF-I	None	N/a	N/a
No tag	<i>Fraxinus excelsior</i>	14	Multi stemmed ash with areas of thick ivy on several of the stems that could be used by bats	Mature	FAR	Unsuitable for ATI. Nocturnal Survey	N/a	N/a
Tag 0161	<i>Populus sp.</i>	20	Precautionary ATI of pollarded tree.	Mature	PRF-I	PRF-I	No bats, no evidence	N/a
No tag	<i>Populus sp.</i>	18	Pollarded Poplar with hollow at top	Mature	None	None	N/a	N/a
Tag 160.	<i>Populus sp.</i>	24	2 cavities in canopy visible from pavement	Mature	PRF-I	PRF-M	No change	N/a
Tag 0165	<i>Acer campestre</i>	9	N/s	Mature	PRF-I	PRF-I. First and only inspection completed.	N/a	N/a

Reference	Tree Species	Tree Height (m)	Description of roosting features	Tree condition	Suitability to support roosting bats (GLTA)	Results after ATI #1	Results after ATI #2	Results after ATI #3
No tag	<i>Fraxinus excelsior</i>	17	Dense ivy stems and plates on much of the bottom half of tree.	Mature	PRF-I	Unsuitable for ATI. Nocturnal Survey	N/a	N/a
No tag	<i>Populus sp.</i>	16	Potential PRF's in canopy	Mature	PRF-I	None	N/a	N/a
Tag 0369.	<i>Fraxinus excelsior</i>	16	Ash bottom of bank (ditch). Couple of Knot holes to check approx 6m.	Mature	PRF-I	None	N/a	N/a
Tag 0370	<i>Salix sp.</i>	6	2 x adjacent willows in ditch. Crevice in tagged trunk (torch died). Knot hole on trunk behind where branches cross	Semi-mature	PRF-I	PRF-I	Downgraded to PRF-I	N/a
Tag 0372	<i>Alnus glutinosa</i>	16	Triple stem tree. Road side of bank. Several knot holes to inspect on all three trunks.	Mature	PRF-I	None	N/a	N/a
Tag 0373.	<i>Salix caprea</i>	12	Willow over hanging river. Crack under lower limb.	Mature	PRF-I	PRF-I. First and only ATI completed.	N/a	N/a
No tag	<i>Salix sp.</i>	7	2x Willow trees multi trunked. In ditch. Several holes/cavities to check on both.	Semi-mature	PRF-I	PRF-M	No change	N/a
Tag 0375	<i>Salix sp.</i>	10	Multi trunked willow in ditch. Several cavities in lower limbs/trunks. 1 cavity @approx 2m	Mature	PRF-I	PRF-M	No change	N/a

Reference	Tree Species	Tree Height (m)	Description of roosting features	Tree condition	Suitability to support roosting bats (GLTA)	Results after ATI #1	Results after ATI #2	Results after ATI #3
Tag 0376	<i>Maple</i>	12	Fused branches, to check crevices in between.	Mature	PRF-I	PRF-I. First and only ATI completed.	N/a	N/a
Tag 0377	<i>Acer campestre</i>	14	Splits in trunk, lifted bark.	Mature	PRF-I	PRF-I. First and only ATI completed.	N/a	N/a
Tag 0379	<i>Quercus robur</i>	18	Crack in trunk on west side.	Mature	PRF-I	None	N/a	N/a
Tag 0381	<i>Quercus robur</i>	16	Cavity in north-western branch.	Mature	PRF-I	To be completed	no bats, no evidence	N/a
No tag	<i>Populus sp.</i>	14	Rot holes	Mature	PRF-I	PRF-I. First and only ATI completed.	N/a	N/a
Tag 0579.	<i>Fraxinus excelsior</i>	10	N/s	Semi-mature	PRF-I	PRF-M	no bats, no evidence	N/a
Tag 586	<i>Quercus robur</i>	12	Mature oak. Rot holes at end of branch overhanging car park. Rot hole on trunk 2.5m, car park side.	Mature	PRF-I	PRF-M	N/a	N/a
Tag 585	<i>Prunus avium</i>	10	Cavity under lifting bark in east side.	Mature	PRF-I	PRF-I. First and only ATI completed.	N/a	N/a
Tag 567	<i>Acer campestre</i>	9	N/s	Mature	PRF-I	PRF-M	N/a	N/a
Tag 0582.	<i>Unknown tree sp.</i>	5	Dead half fallen tree. Rot holes/cavities to check.	Dead	PRF-I	None	N/a	N/a
Tag 0591	<i>Quercus robur</i>	10	Multiple cavities, split limbs	Mature	PRF-I	PRF-M	N/a	N/a
Tag 0387,	<i>Populus sp.</i>	14	Woodpecker hole	Mature	PRF-I	PRF-M	N/a	N/a

Reference	Tree Species	Tree Height (m)	Description of roosting features	Tree condition	Suitability to support roosting bats (GLTA)	Results after ATI #1	Results after ATI #2	Results after ATI #3
Tag 0391,	<i>Quercus robur</i>	12	One cavity	Semi-mature	PRF-I	PRF-I. First and only inspection completed.	N/a	N/a
Tag 0392	<i>Prunus avium</i>	8	Striping bark, broken limbs and possible cavity	Mature	PRF-I	None	N/a	N/a
Tag 0393	<i>Quercus robur</i>	10	Cavity on trunk	Mature	PRF-I	PRF-I. First and only inspection completed.	N/a	N/a
Tag 0394,	<i>Salix sp.</i>	10	Splits in bark	Mature	PRF-I	None	N/a	N/a
Tag 0396	<i>Quercus robur</i>	12	Crevice on limb.	Mature	PRF-I	PRF-M	No change	N/a
Tag 199	<i>Salix sp.</i>	7	Multi stemmed, spreading willow with several cavities in stems.	Immature	PRF-I	PRF-I. First and only inspection completed.	N/a	N/a
No tag	<i>Salix sp.</i>	7	No Data	Mature	PRF-I	PRF-I. First and only inspection completed.	N/a	N/a
No tag	<i>Salix sp.</i>	6	Between pavement and ditch	Mature	PRF-I	PRF-I. First and only inspection completed.	N/a	N/a
Tag 198.	<i>Acer pseudoplatanus</i>	13	Small areas of lifted bark, visible using a bright torch	Dead	PRF-I	Unsuitable for ATI	No bats, no evidence	N/a
Tag 196	<i>Salix sp.</i>	9	Collapsed willow beside ditch	Mature	PRF-I	PRF-I.	No change	No
Tag 195	<i>Salix sp.</i>	9	Collapsed willow beside ditch	Mature	PRF-I	PRF-M	No bats, no evidence	No
Tag 193.	<i>Salix sp.</i>	8	3 stems growing from ditch	Semi-mature	PRF-I	PRF-I	No bats, no evidence	No
Tag 194	<i>Salix sp.</i>	7	N/s	Semi-mature	PRF-I	PRF-I	N/a	N/a

Reference	Tree Species	Tree Height (m)	Description of roosting features	Tree condition	Suitability to support roosting bats (GLTA)	Results after ATI #1	Results after ATI #2	Results after ATI #3
Tag 197	<i>Salix sp.</i>	15	N/s	Mature	PRF-I	PRF-I	Found another, high potential, feature under branch. No bats, no evidence	N/a
Tag 99	<i>Salix sp.</i>	9	N/s	Mature	PRF-I	PRF-I. First and only inspection completed.	N/a	N/a
Tag 188	<i>Salix sp.</i>	4	N/s	Mature	PRF-I	PRF-M	No bats, no evidence	N/a
Tag 0397	<i>Crataegus monogyna</i>	4	N/s	Semi-mature	PRF-I	PRF-M	No change	N/a
Tag 184	<i>Quercus robur</i>	12	N/s	Semi-mature	PRF-I	PRF-I. First and only inspection completed.	N/a	N/a
Tag 0398.	<i>Quercus robur</i>	8	Rot cavity on trunk	Semi-mature	PRF-I	PRF-I. First and only inspection completed.	N/a	N/a
Tag 0399.	<i>Quercus robur</i>	10	Cavity between two fused branches over path.	Semi-mature	PRF-I	None	N/a	N/a
Tag 192	<i>Alnus glutinosa</i>	15	Multi stemmed alder beside ditch	Mature	PRF-I	PRF-I. First and only inspection completed.	N/a	N/a
Tag 191.	<i>Ulmus procera</i>	13	Cluster of dead standing trees	Dead	PRF-I	PRF-I. First and only inspection completed.	N/a	N/a

Reference	Tree Species	Tree Height (m)	Description of roosting features	Tree condition	Suitability to support roosting bats (GLTA)	Results after ATI #1	Results after ATI #2	Results after ATI #3
Tag 190.	<i>Alnus glutinosa</i>	15	Multi stemmed alder beside path	Mature	PRF-I	PRF-I. First and only inspection completed.	N/a	N/a
Tag 189.	<i>Ulmus procera</i>	11	Collection of dead standing elms between path and pavement	Dead	PRF-I	PRF-I. First and only inspection completed.	N/a	N/a
Tag 186	<i>Ulmus procera</i>	16	Group of 5 dead standing elms between pavement and path	Dead	PRF-I	PRF-I	No bats, no evidence	N/a
Tag 185.	<i>Quercus robur</i>	25	Tri stemmed oak beside path.	Mature	PRF-I	PRF-I	Part of feature has fallen since last survey, downgraded to Low PRF.	N/a
Tag 183.	<i>Salix sp.</i>	7	Growing from ditch	Mature	PRF-I	PRF-I	No change	N/a
Tag 181	<i>Salix sp.</i>	4	Collapsed willow over ditch.	Mature	PRF-I	Unsuitable for ATI. Endoscope from ground	No bats, no evidence	N/a
Tag 179	<i>Salix sp.</i>	4.5	Semi collapsed tree in ditch.	Mature	PRF-I	Unsuitable for ATI. Endoscope from ground.	No change	N/a
Tag 177	<i>Fraxinus excelsior</i>	12	N/s	Semi-mature	PRF-I	To be completed	N/a	N/a
Tag 174.	<i>Acer campestre</i>	7	Unsafe for ladder. Tree overhanging ditch. Second cavity at approximately 2.5m	Mature	PRF-I	Unsuitable for ATI. Nocturnal survey	N/a	N/a

Reference	Tree Species	Tree Height (m)	Description of roosting features	Tree condition	Suitability to support roosting bats (GLTA)	Results after ATI #1	Results after ATI #2	Results after ATI #3
Tag 0001	<i>Fraxinus excelsior</i>	10	Rot hole at end of branch facing car park (west aspect). Can't see how far in it goes.	Mature	PRF-I	PRF-I. First and only inspection completed	N/a	N/a
Tag 0002.	<i>Ulmus procera</i>	8	Flaking bark. Emergence survey	Dead	PRF-I	PRF-M	No bats, no evidence	N/a
Tag 0003.	<i>Quercus robur</i>	12	No visible features from ground. Potential for features in canopy not visible from ground	Mature	PRF-I	PRF-I. First and only inspection completed	N/a	N/a
Tag 0175.	<i>Salix sp.</i>	8	Split branch overhanging ditch, and rot cavity on trunk	Semi-mature	PRF-I	PRF-M	No change	N/a
Tag 0004.	<i>Quercus robur</i>	14	Multiple cavities. overhanging river	Mature	PRF-I	PRF-M	not bats, no evidence	N/a
Tag 182.	<i>Quercus robur</i>	17	N/s.	Mature	PRF-I	PRF-M	No change	N/a
Tag 180.	<i>Salix sp.</i>	6	Beside ditch	Mature	PRF-I	PRF-I. First and only inspection completed	N/a	N/a
Tag 178	<i>Betula pendula</i>	6	Growing diagonally from ditch	Semi-mature	PRF-I	PRF-I. First and only inspection completed	N/a	N/a
Tag 176.	<i>Salix sp.</i>	10	Tri stemmed willow in ditch	Mature	PRF-I	PRF-I. First and only inspection completed	N/a	N/a
Tag 175.	<i>Salix sp.</i>	8	Beside ditch	Mature	PRF-I	PRF-I. First and only inspection completed	N/a	N/a
Tag 0005	<i>Betula pendula</i>	8	N/s	Semi-mature	PRF-I	None	N/a	N/a

Reference	Tree Species	Tree Height (m)	Description of roosting features	Tree condition	Suitability to support roosting bats (GLTA)	Results after ATI #1	Results after ATI #2	Results after ATI #3
Tag 0008	<i>Quercus robur</i>	14	Rot hole and splits on south-eastern branch.	Mature	PRF-I	PRF-M	N/a	N/a
Tag 0007.	<i>Quercus robur</i>	10	No visible features but moderate size oak. May have features in canopy.	Mature	None	None	N/a	N/a
Tag 0009	<i>Salix sp.</i>	6	Wonky tree, two rot holes (0.5m and 1.5m high).	Semi-mature	PRF-I	PRF-M	N/a	N/a
Tag 159.	<i>Quercus robur</i>	14	Mature oak. Large rot cavity at end of eastern branch	Mature	PRF-I	PRF-M	N/a	N/a
Tag 0171	<i>Quercus robur</i>	15	N/s	Mature	PRF-I	PRF-M	No bats, no evidence	N/a
Tag 0169.	<i>Quercus robur</i>	18	N/s	Mature	PRF-I	PRF-M	N/a	N/a
Tag 0010	<i>Acer campestre</i>	6	Over hanging ditch. Access through trees to the north. Rot cavity at base, endoscope from ground.	Mature	PRF-I	To be completed	N/a	N/a
Tag 0011.	<i>Acer campestre</i>	6	Large rot hole on trunk. Access through trees to north	Mature	PRF-I	PRF-I. First and only inspection completed	N/a	N/a
Tag 170	<i>Quercus robur</i>	8	Two rot holes on east branch. Visible from grass area to north but can't access to tag due to dense bramble.	Mature	PRF-I	PRF-I. First and only inspection completed	N/a	N/a

Reference	Tree Species	Tree Height (m)	Description of roosting features	Tree condition	Suitability to support roosting bats (GLTA)	Results after ATI #1	Results after ATI #2	Results after ATI #3
Tag 0054.	<i>Quercus robur</i>	12	2+ potential cavities. Not safe to ATI.	Dead	PRF-I	Unsuitable for ATI. Nocturnal survey	N/a	N/a
Tag 0012.	<i>Quercus robur</i>	16	Woodpecker hole base of dead beach south-west elevation	Mature	PRF-I	PRF-I. First and only inspection completed	N/a	N/a
Tag 4509	<i>Quercus robur</i>	12	Triple trunked, several features.	Mature	PRF-I	PRF-M	N/a	N/a
Tag 0013.	<i>Quercus robur</i>	14	Split in branch to check.	Mature	PRF-I	PRF-I. First and only inspection completed	N/a	N/a
Tag 0014.	<i>Quercus robur</i>	16	One feature observed from ground. Large multi trunked tree. Potentially more features further up	Mature	PRF-I	PRF-I. First and only inspection completed	N/a	N/a
Tag 0015.	<i>Betula pendula</i>	8	Rot hole on east side of trunk, tree is on west side of group of trees	Semi-mature	PRF-I	None	N/a	N/a
Tag 0017	<i>Quercus robur</i>	12	Rot hole on south-eastern branch	Mature	PRF-I	To be completed	N/a	N/a
Tag 0016.	<i>Quercus robur</i>	12	Rot hole on south-eastern branch	Mature	PRF-I	PRF-I. First and only inspection completed	N/a	N/a
Tag 0018.	<i>Quercus robur</i>	16	Rot hole on trunk. Tree currently due to be retained	Mature	PRF-I	To be completed	N/a	N/a
Tag 0019	<i>Acer campestre</i>	8	Small rot hole on truck, right of tag.	Mature	PRF-I	To be completed	N/a	N/a

Reference	Tree Species	Tree Height (m)	Description of roosting features	Tree condition	Suitability to support roosting bats (GLTA)	Results after ATI #1	Results after ATI #2	Results after ATI #3
Tag 0020	<i>Carpinus betulus</i>	8	Multi-trunked. Rot hole on trunk.	Mature	PRF-I	To be completed	N/a	N/a
Tag 0021	<i>Quercus robur</i>	14	Mature oak with dense ivy. No visible features.	Mature	PRF-I	To be completed	N/a	N/a
Tag 0022	<i>Quercus robur</i>	12	Mature oak by footpath with hibernation bat box on north side.	Mature	PRF-I	To be completed	N/a	N/a
Tag 0023	<i>Quercus robur</i>	14	Mature oak with dense ivy.	Mature	PRF-I	To be completed	N/a	N/a
Tag 0024	<i>Quercus robur</i>	14	Mature oak. No visible features, but likely to have some in canopy.	Mature	PRF-I	To be completed	N/a	N/a
Tag 164	<i>Quercus robur</i>	17	N/s	Mature	PRF-I	PRF-I. First and only inspection completed	N/a	N/a
Tag 163	<i>Quercus robur</i>	12	N/s	Mature	PRF-I	PRF-I. First and only inspection completed	N/a	N/a
Tag 162.	<i>Quercus robur</i>	12	Covered in light ivy.	Mature	FAR	Unsuitable for ATI. Nocturnal survey.	N/a	N/a
Tag 983	<i>Quercus robur</i>	12	N/s	Mature	PRF-I	To be completed	N/a	N/a
No tag	<i>Quercus robur</i>	8	N/s	Semi-mature	PRF-I	PRF-I. First and only inspection completed	N/a	N/a
Tag 0025.	<i>Quercus robur</i>	12	Small rot hole on limb to check to the south-west.	Mature	PRF-I	PRF-I. First and only inspection completed	N/a	N/a

Reference	Tree Species	Tree Height (m)	Description of roosting features	Tree condition	Suitability to support roosting bats (GLTA)	Results after ATI #1	Results after ATI #2	Results after ATI #3
Tag 0026.	<i>Quercus robur</i>	10	Damage to base of trunk and with cavity to endoscope. Several rot holes and splits seen on dead limbs to check at height.	Mature	PRF-I	PRF-M	No bats, no evidence	N/a
Tag 2679	<i>Fraxinus excelsior</i>	17	N/s	Mature	PRF-I	PRF-M	N/a	N/a
Tag 0937	<i>Quercus robur</i>	20	N/s	Mature	PRF-I	PRF-I. First and only inspection completed	N/a	N/a
Tag 2675	<i>Pinus sp.</i>	16	N/s	Mature	PRF-I	PRF-I. First and only inspection completed	N/a	N/a
Tag 4511	<i>Quercus robur</i>	11	N/s	Mature	PRF-I	PRF-M	N/a	N/a
Tag 0989	<i>Populus sp.</i>	17	N/s	Mature	PRF-I	PRF-I. First and only inspection completed	N/a	N/a
Tag 158.	<i>Quercus robur</i>	14	Tree is surrounded by scrub but can be accessed from North.	Mature	PRF-I	To be completed	N/a	N/a
Tag 156	<i>Quercus robur</i>	12	N/s	Mature	FAR	PRF-I. First and only inspection completed	N/a	N/a
Tag 154	<i>Quercus robur</i>	12	N/s	Mature	PRF-I	PRF-I. First and only inspection completed	N/a	N/a
Tag 157	<i>Quercus robur</i>	14	N/s	Mature	PRF-I	To be completed	N/a	N/a
Tag 155	<i>Quercus robur</i>	11	N/s	Mature	PRF-I	To be completed	N/a	N/a

Reference	Tree Species	Tree Height (m)	Description of roosting features	Tree condition	Suitability to support roosting bats (GLTA)	Results after ATI #1	Results after ATI #2	Results after ATI #3
Tag 0027	<i>Quercus robur</i>	3	Folded bark and crevice to west side	Semi-mature	PRF-I	To be completed	N/a	N/a
Tag 0028	<i>Quercus robur</i>	8	Folded bark on one limb to the south-east. 2 x small crevices to check	Semi-mature	PRF-I	To be completed	N/a	N/a
Tag 0179	<i>Salix sp.</i>	12	Split trunk over hanging ditch. 2 x surveyors	Semi-mature	PRF-I	Unsuitable for ATI. Nocturnal survey	N/a	N/a
Tag 0181	<i>Salix sp.</i>	3	Access from riverside path. 1x surveyor	Mature	PRF-I	Unsuitable for ATI. Nocturnal survey	N/a	N/a

3.3 Nocturnal Emergence Surveys

- 3.3.1 Nocturnal dusk emergence surveys are required for a number of trees where detailed inspections were not possible during the climbing inspections (referred to as 'unsuitable for climb' in Table 3.2). These surveys are currently being completed and will be added to a revised version of this report upon completion.
- 3.3.2 The trees requiring dusk emergence surveys are shown in Figures 3.5-3.8.

4 Summary

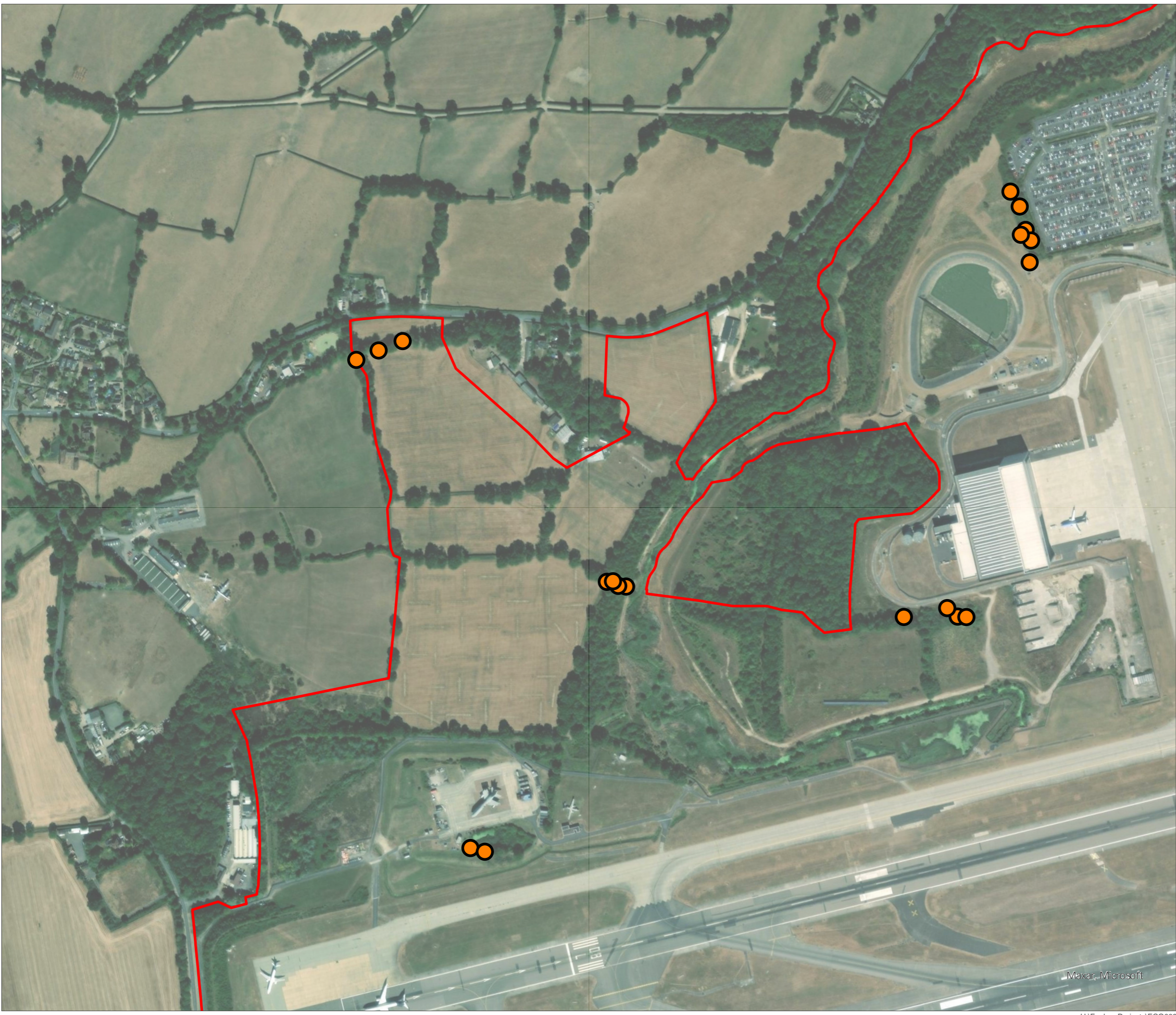
- 4.1.1 This report presents the results of the GLTA and the ATA surveys undertaken in 2024 for the Project to date (Deadline 8). It will also be amended to include the dusk emergence surveys which are currently ongoing and due for completion by late August.
- 4.1.2 A total of 192 trees were subject to the GLTA. Of the 192 trees assessed as part of the GLTA, 191 were considered to have PRF-I suitability while five were considered to have PRF-M suitability. Six trees were assessed as having no roosting potential from the ground and nine trees were classified as FAR (further assessment required).
- 4.1.3 A total of 158 trees were subject to a detailed inspection, either via climbing or with an endoscope from a ladder. Following the ATA, 77 trees were found to have PRF-I suitability, 51 trees had PRF-M suitability and 30 trees had 'none' suitability; 13 trees required nocturnal surveys as they were found to be unsuitable for climbing.
- 4.1.4 The surveys are on-going and the final report will be provided once surveys are complete. To date, however, no roosts have been confirmed within any of the trees assessed for removal as part of the Project (based on the worst case assessment).
- 4.1.5 Therefore, the mitigation with respect to trees with bat roost potential, set out in section 5.4.19 in ES Appendix 5.3.2 Code of Construction Practice [\[REP7-022\]](#) is still considered relevant. This sets out that where trees with potential bat roost features (PRFs) require removal, those trees with Low bat roost potential will be subject to a supervised soft-felling methodology and those with Medium or High bat roost potential will be subject to climbing inspections and/or dusk emergence/dawn re-entry surveys as appropriate to inform where further mitigation is required. If any roosts are identified, this will include an application for a Natural England licence with supporting method statement. A range of bat boxes suitable for the species recorded foraging and commuting in the area and which imitate the type of PRFs present in trees will be installed on retained trees prior to any vegetation clearance to ensure that was not an overall loss of roost features available. The bats boxes will be located within woodland managed by the GAL Biodiversity team.

5 References

Bat Conservation Trust (2023). *Guidance Note 08/2023: Bats and Artificial Lighting at Night*. Institute of Lighting Professionals, Rugby.

CIEEM (2016). *Guidelines for Ecological Impact Assessment in the UK and Ireland: Terrestrial, Freshwater and Coastal*. Chartered Institute of Ecology and Environmental Management, Winchester.

Collins, J. (ed.) (2023). *Bat surveys for Professional Ecologists: Good Practice Guidelines (4th edition)*. The Bat Conservation Trust, London.



KEY

- Site boundary
- Ground Level Tree Assessment**
- PRF-M
- PRF-I
- FAR
- None
- No Data

DOCUMENT

Environmental Statement

DRAWING TITLE

Potential Roosting Suitability from the Ground Level Tree Assessment (GLTA)

DATE

August 2024

ORIENTATION



DRAWING NO.

FIGURE 3.1

REVISION

Deadline 8

DRAWN BY

OW

PM / CHECKED BY

NB

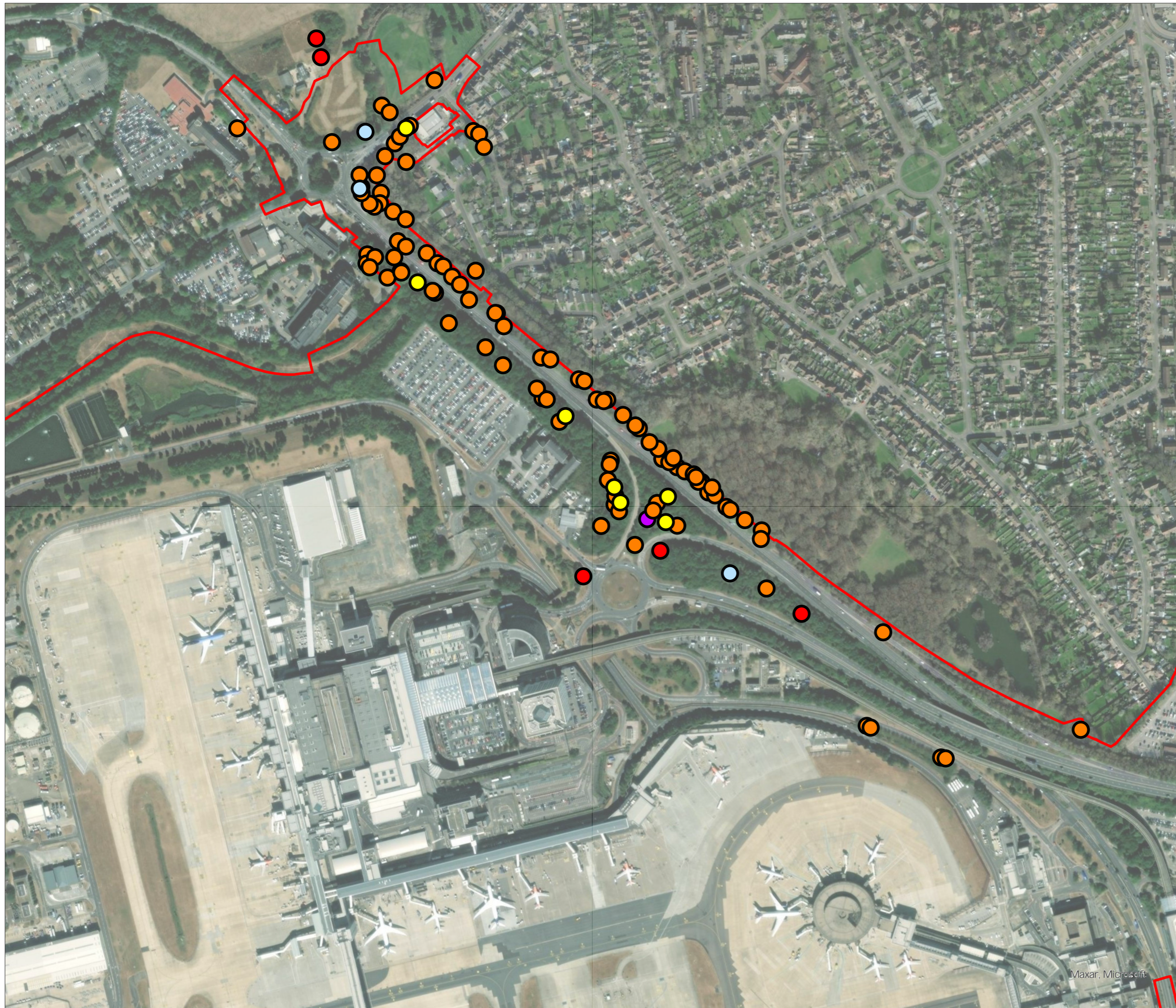
SCALE @ A3 1:5,000



Reproduced from Ordnance Survey map with the permission of Ordnance Survey on behalf of the controller of Her Majesty's Stationery Office © Crown Copyright (2023). License number 0100031673, 10001998, 100048492.

© Copyright 2023 Gatwick Airport Limited. No part of this drawing is to be reproduced without prior permission of Gatwick Airport Limited.

Maxar, Microsoft



KEY

- Site boundary
- PRF-M
- PRF-I
- FAR
- None
- No Data

DOCUMENT

Environmental Statement

DRAWING TITLE

Potential Roosting Suitability from the Ground Level Tree Assessment (GLTA)

DATE

August 2024

ORIENTATION



DRAWING NO.

FIGURE 3.2

REVISION

Deadline 8

DRAWN BY

OW

PM / CHECKED BY

NB

SCALE @ A3 1:5,000



Reproduced from Ordnance Survey map with the permission of Ordnance Survey on behalf of the controller of Her Majesty's Stationery Office © Crown Copyright (2023). License number 0100031673, 10001998, 100048492.

© Copyright 2023 Gatwick Airport Limited. No part of this drawing is to be reproduced without prior permission of Gatwick Airport Limited.

Maxar, Microsoft



KEY

- Site boundary
- PRF-M
- PRF-I
- FAR
- None
- No Data

DOCUMENT

Environmental Statement

DRAWING TITLE

Potential Roosting Suitability from the Ground Level Tree Assessment (GLTA)

DATE

August 2024

ORIENTATION



DRAWING NO.

FIGURE 3.3

REVISION

Deadline 8

DRAWN BY

OW

PM / CHECKED BY

NB

SCALE @ A3 1:5,000



Reproduced from Ordnance Survey map with the permission of Ordnance Survey on behalf of the controller of Her Majesty's Stationery Office © Crown Copyright (2023). License number 0100031673, 10001998, 100048492.

© Copyright 2023 Gatwick Airport Limited. No part of this drawing is to be reproduced without prior permission of Gatwick Airport Limited.

Maxar, Microsoft



KEY

- Site boundary
- PRF-M
- PRF-I
- FAR
- None
- No Data

Ground Level Tree Assessment

DOCUMENT

Environmental Statement

DRAWING TITLE

Potential Roosting Suitability from the Ground Level Tree Assessment (GLTA)

DATE

August 2024

<p>ORIENTATION</p>	DRAWING NO.	REVISION
	FIGURE 3.4	Deadline 8
	DRAWN BY	PM / CHECKED BY
	OW	NB



Reproduced from Ordnance Survey map with the permission of Ordnance Survey on behalf of the controller of Her Majesty's Stationery Office © Crown Copyright (2023). License number 0100031673, 10001998, 100048492.

© Copyright 2023 Gatwick Airport Limited. No part of this drawing is to be reproduced without prior permission of Gatwick Airport Limited.

Maxar, Microsoft



KEY

- Site boundary
- Aerial tree assessment**
- PRF-M
- PRF-I
- Nocturnal Survey
- To be completed
- Unsuitable for climb
- None
- No Data

DOCUMENT

Environmental Statement

DRAWING TITLE

Revised roosting potential/recommendations from the aerial tree assessment

DATE

August 2024

ORIENTATION



DRAWING NO.

FIGURE 3.5

REVISION

Deadline 8

DRAWN BY

OW

PM / CHECKED BY

NB

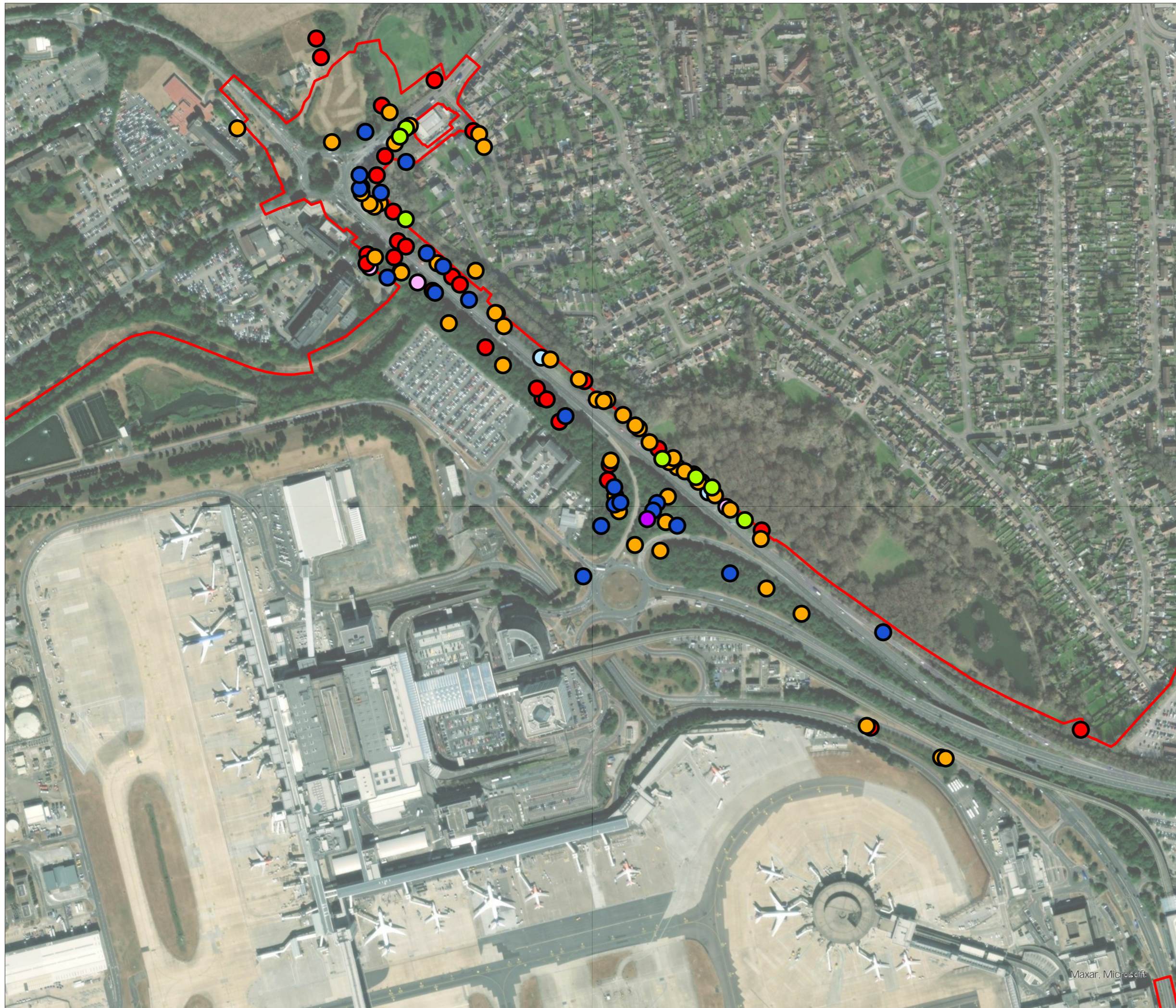
SCALE @ A3 1:5,000



Reproduced from Ordnance Survey map with the permission of Ordnance Survey on behalf of the controller of Her Majesty's Stationery Office © Crown Copyright (2023). License number 0100031673, 10001998, 100048492.

© Copyright 2023 Gatwick Airport Limited. No part of this drawing is to be reproduced without prior permission of Gatwick Airport Limited.

Maxar, Microsoft



KEY

- ▭ Site boundary
- PRF-M
- PRF-I
- Nocturnal Survey
- To be completed
- Unsuitable for climb
- None
- No Data

DOCUMENT

Environmental Statement

DRAWING TITLE

Revised roosting potential/recommendations from the aerial tree assessment

DATE

August 2024

ORIENTATION



DRAWING NO.

FIGURE 3.6

REVISION

Deadline 8

DRAWN BY

OW

PM / CHECKED BY

NB

SCALE @ A3 1:5,000



Reproduced from Ordnance Survey map with the permission of Ordnance Survey on behalf of the controller of Her Majesty's Stationery Office © Crown Copyright (2023). License number 0100031673, 10001998, 100048492.

© Copyright 2023 Gatwick Airport Limited. No part of this drawing is to be reproduced without prior permission of Gatwick Airport Limited.

Maxar, Microsoft



KEY

- Site boundary
- Aerial tree assessment**
- PRF-M
- PRF-I
- Nocturnal Survey
- To be completed
- Unsuitable for climb
- None
- No Data

DOCUMENT

Environmental Statement

DRAWING TITLE

Revised roosting potential/recommendations from the aerial tree assessment

DATE

August 2024

ORIENTATION



DRAWING NO.

FIGURE 3.7

REVISION

Deadline 8

DRAWN BY

OW

PM / CHECKED BY

NB

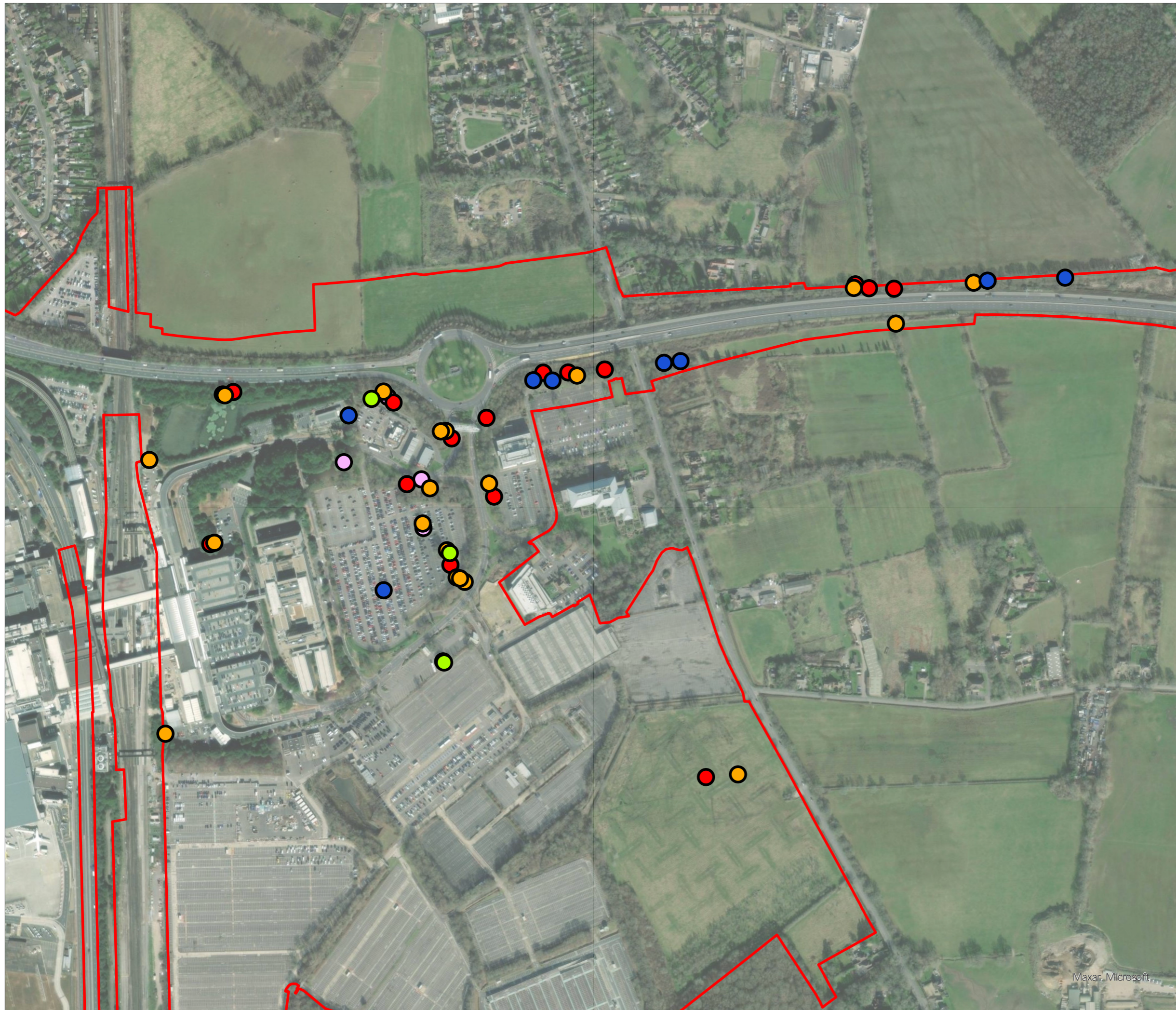
SCALE @ A3 1:5,000



Reproduced from Ordnance Survey map with the permission of Ordnance Survey on behalf of the controller of Her Majesty's Stationery Office © Crown Copyright (2023). License number 0100031673, 10001998, 100048492.

© Copyright 2023 Gatwick Airport Limited. No part of this drawing is to be reproduced without prior permission of Gatwick Airport Limited.

Maxar, Microsoft



KEY

- Site boundary
- PRF-M
- PRF-I
- Nocturnal Survey
- To be completed
- Unsuitable for climb
- None
- No Data

DOCUMENT

Environmental Statement

DRAWING TITLE

Revised roosting potential/recommendations from the aerial tree assessment

DATE

August 2024

ORIENTATION



DRAWING NO.

FIGURE 3.8

REVISION

Deadline 8

DRAWN BY

OW

PM / CHECKED BY

NB

SCALE @ A3 1:5,000



Reproduced from Ordnance Survey map with the permission of Ordnance Survey on behalf of the controller of Her Majesty's Stationery Office © Crown Copyright (2023). License number 0100031673, 10001998, 100048492.

© Copyright 2023 Gatwick Airport Limited. No part of this drawing is to be reproduced without prior permission of Gatwick Airport Limited.

Maxar, Microsoft